

SC BAZA TEHNICA ALFA SRL, BUCURESTI

J40/21846/2004, RO 17073791, Bancpost: Palat CFR, cont: RO77BPOS7040601:

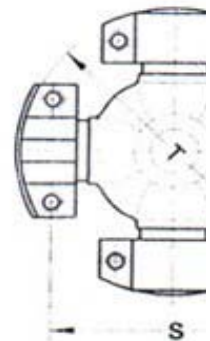
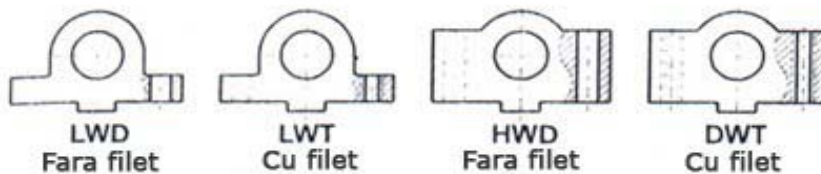
SEDIU si Magazin:Str.CALEA PLEVNEI, Nr. 164, S6, Bucuresti

T/F: 021 3178041,021 3178042, Tel: 0744 365507, 0741 219267, 0743 331

www.bazaalfa.ro, www.rulmenti.ro, www.rulmenti-curele-suruburi.r

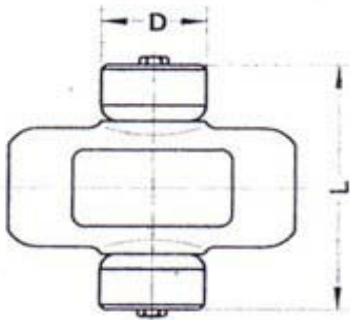
E-mail: bazaalfa@yahoo.com

Cruci cardanice
Cruci cardanice speciale



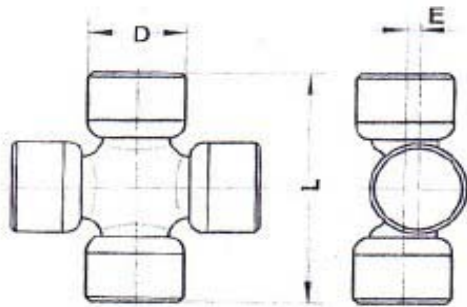
R	S	T	?	!	Kg	COD
33.3	59.5	79.3	3	23	0.63	13769
33.3	59.5	79.3	3	20	0.634	13969
33.3	59.5	79.3	3	21	0.562	13796
36.6	69.9	90.49	3	23	0.75	13972
36.6	69.9	90.49	3	19	0.761	14588
36.6	87.3	107.9	3	20	1.047	14003
36.6	87.3	107.9	3	18	1.048	15395
36.6	87.3	107.9	3	21	1.051	16437
36.6	87.3	107.9	3	19	1.106	13770
36.6	87.3	107.9	3	22	1.05	13974
36.6	87.3	107.9	3	19	1.01	16558
36.6	87.3	107.9	3	23	1.112	13767
42.9	88.9	115	3	18	1.652	17958
42.9	88.9	115	3	23	1.63	13748
42.9	88.9	115	3	20	1.621	18066
42.9	88.9	115	3	19	1.705	16594
42.9	88.9	115	3	22	1.556	13780
42.9	88.9	115	3	21	1.435	13987
42.9	114.3	140.4	3	19	2.105	13766
42.9	114.3	140.4	3	22	2.02	13768
42.9	114.3	140.4	3	23	1.952	13882

42.9	114.3	140.4	3	21	1.875	13978
42,90/49,20	114,30/117,50	140,40/148,40	3	23	2.763	14584
49.2	104	130	3	19	2.65	13848
49.2	108.5	134.94	3	17	2.7	13994
49.2	108.5	134.94	3	19	2.83	14001
49.2	117.5	148.4	3	24	3.03	13773
49.2	117.5	148.4	3	21	2.77	13772
49.2	117.5	148.4	3	23	3.15	13749
49.2	117.5	148.4	3	19	2.85	16562
49.2	174.6	206.3	3	19	4.54	13771
49.2	174.6	206.3	3	22	4.72	13774
49.2	174.6	206.3	3	23	4.712	14925
60	146	180	3	19	5.625	16036
71.4	123.8	165.1	3	17	5.769	14002
71.4	123.8	165.1	3	19	5.68	13980
71.4	168.2	209.5	3	17	6.587	15414
71.4	168.2	209.5	3	19	6.5	13765
71.4	168.2	209.5	3	24	6.478	13986
71.4	168.2	209.5	3	24	6.549	18068
89.9	172.7	222.1	3	19	8.05	14583
92.1	165.1	212.7	3	19	8.975	14924
92.1	165.1	212.7	3	19	9.056	18119

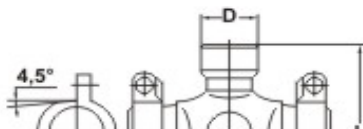


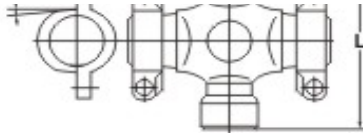
D	L		?	!	Kg	UC Nr
30	96	-	-	-	-	1.17
32	110.7	-	-	-	-	1.68
34.66	130	-	-	-	-	2.485
34.66	130	-	-	-	9	2.52
35	110.7	-	-	-	-	1.784
35	110.7	-	-	-	28	1.236
38	129	-	-	-	-	2.79
38	129	-	-	-	-	2.985
44	134	-	-	-	-	3.2

44	134	-	-	-	29	3.28
47	142	-	-	-	-	4.11

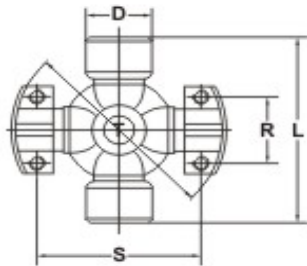


D	L	E	?	!	Kg	UC Nr
23.8	62.5	-	1	-	0.325	17985
23.8	62.8	-	2	-	0.324	17984
27	71	-	1	-	0.426	17986
27	71	-	2	-	0.429	18298
30	79	5	-	-	0.64	16648
30	91	-	1	-	0.699	16530
30	94	-	1	-	0.722	13826
30.1	82	-	1	-	0.648	17987
34	96	6.5	1	-	0.95	14921
34	105	-	1	-	1.145	14920
35	96.5	8	1	9	1.042	17430
35	96.5	8	5	-	1.042	17438
38	104	9	1	9	1.384	17429
38	104	9	5	-	1.384	13859
38	106	-	5	-	1.436	15198
38	107	7.5	1	-	1.358	13830
38	122	-	1	-	1.52	13833
40	121.8	-	1	-	1.68	13852
42	110	7.5	1	-	1.708	14548
42	122	-	1	-	1.9	13865
42	123	-	1	-	1.956	15608
45	121.5	-	1	-	2.21	16110
45	125	8	1	-	2.27	16064
45	152	-	1	-	2.875	13853
50	134	10	1	-	3.08	13854
50	152	10	1	-	3.214	14511





D	L
48	161
57	164
65	190



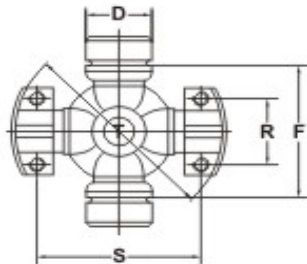
Pentru identificarea crucii cardanice ne trebuie urmatoarele dimensiuni:

D = grosimea pastilei

L = lungimea crucii cu pastila

R = distanta intre cele doua suruburi din capul pastilei

S = distanta surubului intre cele doua pastile



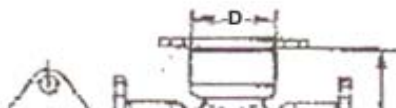
tebuie urmatoarele dimensiuni:

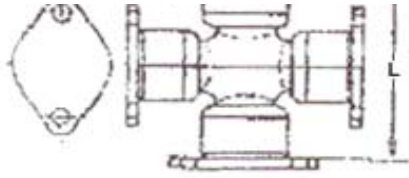
D = grosimea pastilei

F = lungimea crucii intre cele doua sigurante

R = distanta intre cele doua suruburi din capul pastilei

S = distanta surubului intre cele doua pastile

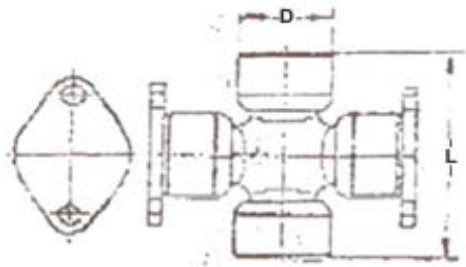




Pentru identificarea crucii cardanice ne tebuie urmatoarele dimensiuni:

D = grosimea pastilei

L = lungimea crucii cu pastila



Pentru identificarea crucii cardanice ne tebuie urmatoarele dimensiuni:

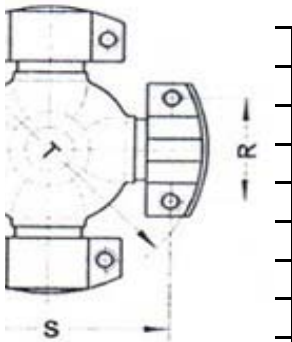
D = grosimea pastilei

L = lungimea crucii cu pastila

2375ROL02

732

0



Tip de prindere

4x LWT

4x LWD

2x LWD; 2x LWT

4x LWT

4x HWD

4x LWD

2x HWD; 2x LWD

2x LWD; 2x LWT

4x HWD

2x LWT; 2x HWD

4x HWD

4x LWT

2x HWD; 2x LWD

4x LWT

4x LWD

4x HWD

2x LWT; 2x HWD

2x LWD; 2x LWT

4x HWD

2x LWT; 2x HWD

4x LWT

2x LWD; 2x LWT
4x LWT
4x HWD
4x DWT
4x HWD
2x HWD; 2x DWT
2x LWD; 2x LWT
4x LWT
4x HWD
4x HWD
2x LWT; 2x HWD
4x LWT
4x HWD
4x DWT
4x HWD
4x DWT
4x HWD
2x HWD; 2x DWT
2x HWD; 2x DWT
4x HWD
4x HWD
4x HWD

Seria
GWB 369,10
GWB 369,20
GWB 269,30
GWB 269,30
GWB 369,21
GWB 369,21
GWB 369,30
GWB 369,35
GWB 369,37

GWB 369,37

GWB 369,40

Seria

BTB 300

BTB 300

BTB 310

BTB 310

ELBE 509

-

ELBE 411

BTB 320

ELBE 511

ELBE 412

GWB 469,2

GWB 469,2

GWB 469,3

GWB 469,3

ELBE 413

ELBE 512

ELBE 414

-

ELBE 513

ELBE 415

ELBE 415

ELBE 416

ELBE 515

ELBE 418

ELBE 516

ELBE 518
